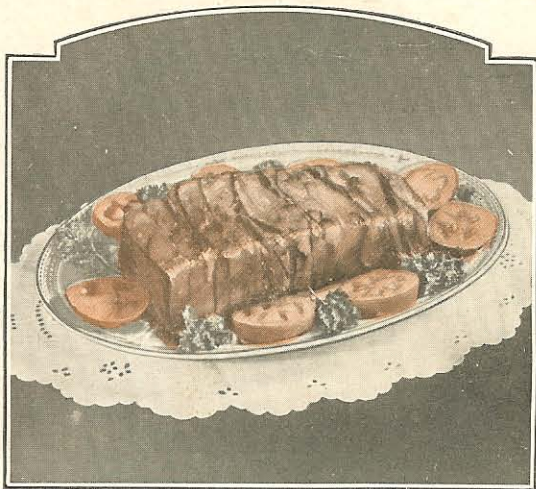


Monarch in Nile-Green The Famous Kitchen Economist in New Modern Finishes

The MONARCH, famous for years for its durable, malleable construction and rust resisting finishes used on the cooking surface, as well as for oven wall and flue lining protection, is now offered in modern, tinted enamels: Ivory-Tan, Nile-Green or All White. This new full enamel finish has created a new and important feature; the MONARCH four-wall construction, assuring longer life and greater fuel economy. Ask to have it demonstrated.



Bacon Meat Loaf

- $\frac{1}{4}$ lb. bacon
- $\frac{1}{2}$ lb. lean veal
- 1 lb. lean beef
- 6 slices bacon
- 1 green pepper
- 2 eggs
- 1 c. milk
- 1 c. bread crumbs

Grind the meat. Mix with chopped green pepper, eggs, milk, and bread crumbs. Line baking pan with strips of bacon. Fill with meat mixture. Lay strips of bacon over top. Bake in 400° F. oven for 45 min. Turn upside down on a large platter and garnish with vegetables or mashed potatoes.